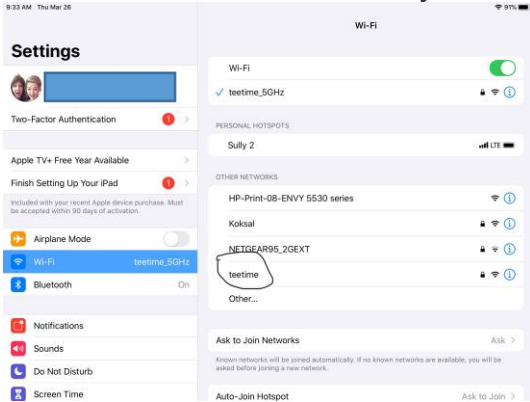
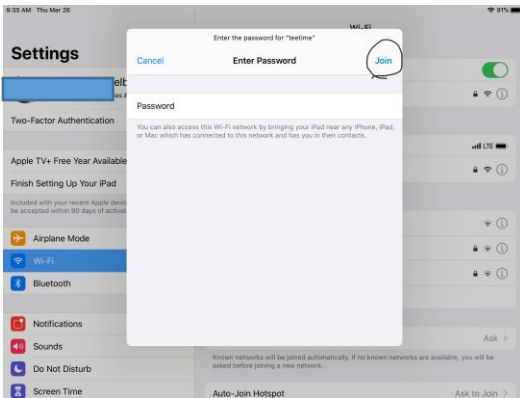


# How to Connect Your iPad to a Network


1. From the Home screen, go to Settings > Wi-Fi.
2. Your device will automatically search for available Wi-Fi networks.

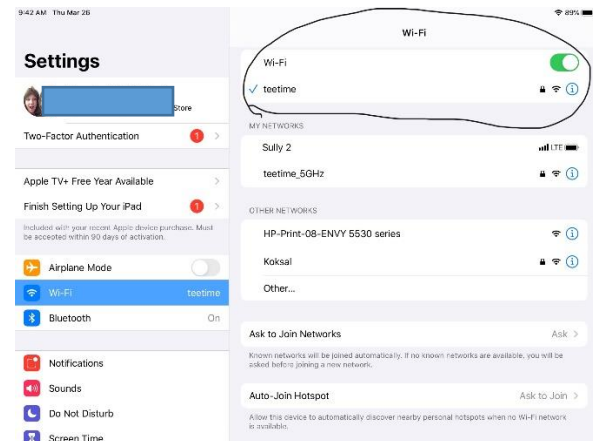


3. Tap the name of the Wi-Fi network you want to join.
4. You will be asked to enter the password for the network. When you have entered the password, tap JOIN.



If you are joining a public network, you will not be prompted for a password. If you are going to a school parking lot to use that Wi-Fi, your school iPad will automatically connect to it.

5. After you join a network, you'll see ✓ next to the network and  in the upper-left corner of your display or the upper-right corner.



Once you have joined a network, your iPad will remember it and will automatically connect.